

VIRTUALIZE ME

aka vME - Data Virtualization for DevOps

Product Features



Snapshot your Source Data Easily



Request your Virtual Test Data on Demand



Rapidly Provision Test Data in Seconds



Isolate Individuals Test Data Using Containers



Codify / DevOps Your Data Using the API or CLI

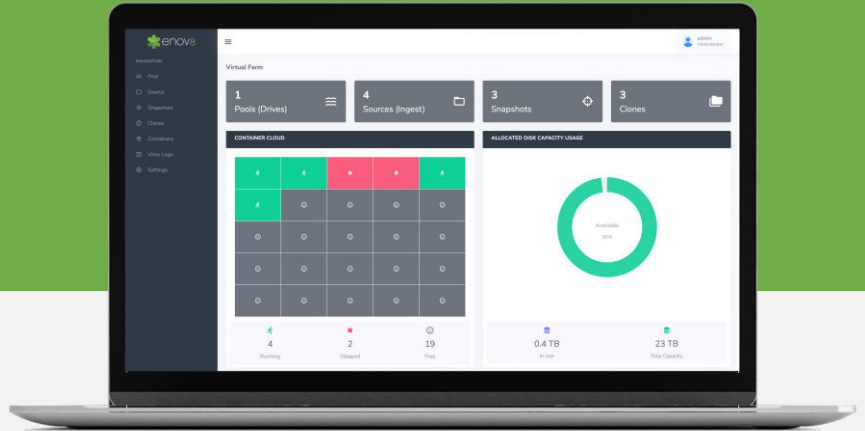


High Performance Via Horizontal & Vertical Scaling



Intuitive interface so you can be up and running in minutes

enov8.com



vME AT A GLANCE

VirtualizeMe, or vME for short, is a Data Virtualization & Cloning solution that enables users to quickly generate multiple copies of large test data sets.

It allows developers and testers to easily access their own personal copies of the data, providing them with the freedom to use the test data whenever needed throughout the software development process.

Additionally, this feature is fast and lightweight, resulting in storage savings and cost savings across the software development lifecycle.

THE PROBLEM

When managing data, most companies suffer from four key problems. These are:

- 1 Poor Cadence: Delays in software development due to slow provisioning.
2. High Cost: Overheads due to large data sources and use of specialized professionals.
3. Poor Quality: Cause by Data inconsistencies & inaccuracies.
4. Non-Serviceability: A lack of autonomy and a reliance on specialists.

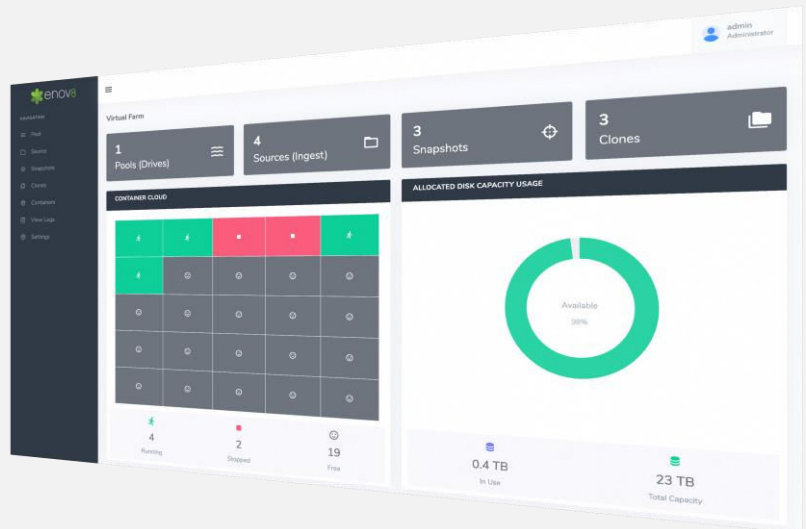
DEVOPS THAT DATA!

You will never have to worry about getting realistic databases for dev, test and CI/CD again.

The vME Microweb

vME offers a light and intuitive web interface for easy administration of Virtual Test Data i.e., Data Clones.

vME also provides a complete API and Command Line Interface (CLI) for automation of your data operations.



THE SOLUTION

Test data virtualization with vME can help resolve these challenges, allowing teams to deliver applications to market faster.

vME reduces development lifecycle time and costs, providing the ability to create virtual copies of test data on demand in seconds.

vME Cloning facilitates the rapid development of test data sets, reducing the duration and cost of development cycles. It provides instant generation of virtual copies of test data on request, thus enhancing and extending Test Data Management options and capabilities. Each tester can generate their own personal copy of test data as needed, leveraging multiple data sources (e.g., RDBMS, flat files). This allows for the production of multiple large test data sets quickly and efficiently.

Note: vME can be purchased as a standalone data cloning appliance and/or bundled with Enov8's*, Test Data Manager.

Learn more at enov8.com

Copyright © 2023 Enov8 Ltd

KEY BENEFITS

vME Key Differentiators:

- Reduces data storage of test data instances by up to 95%.
- Copy time is almost non-existent when creating a virtual clone.
- Avoid conflicts between teams by providing each team with isolated copies of data for testing.
- Tasks can be actioned via an intuitive micro-web or through the vME API/CLI.
- Each appliance can host up to 25 unique Database Containers.
- Easily scales out horizontally to support other divisions by installing additional appliances.
- Costed so you can easily shrink or grow based on your demands.

RELATED PRODUCTS

*VirtualizeMe is a member of the Enov8 product family. Related IT & Test Environment & Data products include:

- Enov8 [Test Data Manager](#)
- Enov8 [Environment Manager](#)
- Enov8 [Release Manager](#)