



# TEST DATA MANAGER

Govern, Secure, and Deliver Test Data at Scale

A unified platform to govern, secure, and deliver test data across the lifecycle

## Key Benefits

**Accelerate Delivery.  
Strengthen Security.**

### DEVSEC

- ✓ Gain full visibility of your data landscape
- ✓ Identify sensitive data and risk exposure early
- ✓ Automate data protection and securitization
- ✓ Deliver clear, audit-ready compliance insights

### DEVOPS

- ✓ Streamline and automate data operations
- ✓ Rapidly discover and provision test data
- ✓ Eliminate data conflicts across teams
- ✓ Provision lightweight, virtualized data environments

[www.enov8.com](http://www.enov8.com)



## IDENTIFY, SECURE, AND DELIVER SAFE TEST DATA

Identifies data security exposures within production data, enables rapid remediation to reduce breach risk, and centrally validates compliance.

The solution also comes with delivery accelerators, including data reservation, data synthetics, data subsetting & Database Virtualization.

## WHO NEEDS ENOV8?

Enov8 is for teams needing greater visibility and control of platform data.

Ideal for:

- Security and Risk Teams
- Compliance Officers
- Product Teams
- Test Data and Environment Managers
- Release and Deployment Teams

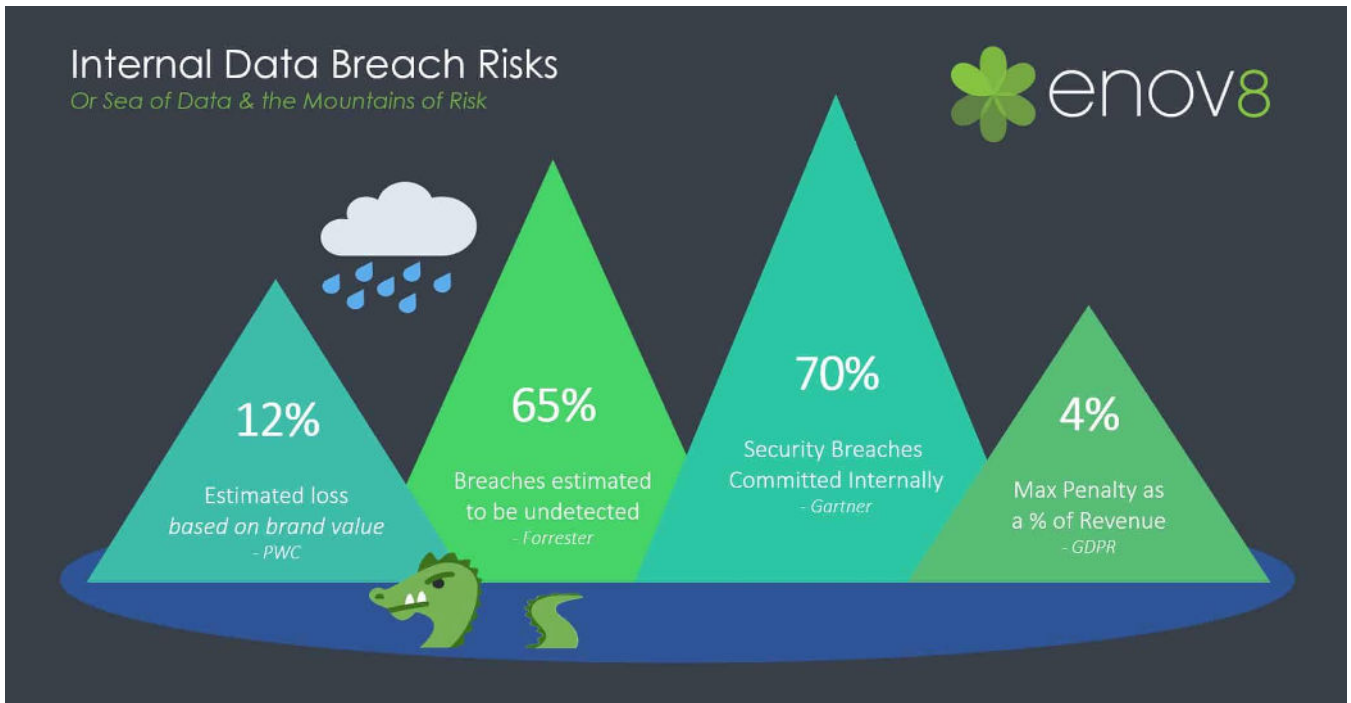
Enables Development and Test teams with secure, reliable data.

## The Problem

IT projects require production like data to build and test effectively, but this introduces compliance risk. Organisations are responsible for protecting PII and sensitive data, with failures leading to financial penalties, reputational damage, and regulatory breaches across evolving privacy laws.

## The Challenge

Data environments are large, complex, and difficult to govern. Sensitive data is often hidden, making risks hard to detect. Manual data security processes are slow, error prone, and expensive, while remediation can take months and depend heavily on specialist expertise.



*Most risks remain hidden. Enov8 surfaces and remediates them early.*

## Why It Matters

- Data loss directly impacts customers and trust
- Non-compliance leads to fines and sanctions
- Organisations face financial and legal exposure
- Regulations continue to evolve
- Data breaches are increasing in frequency

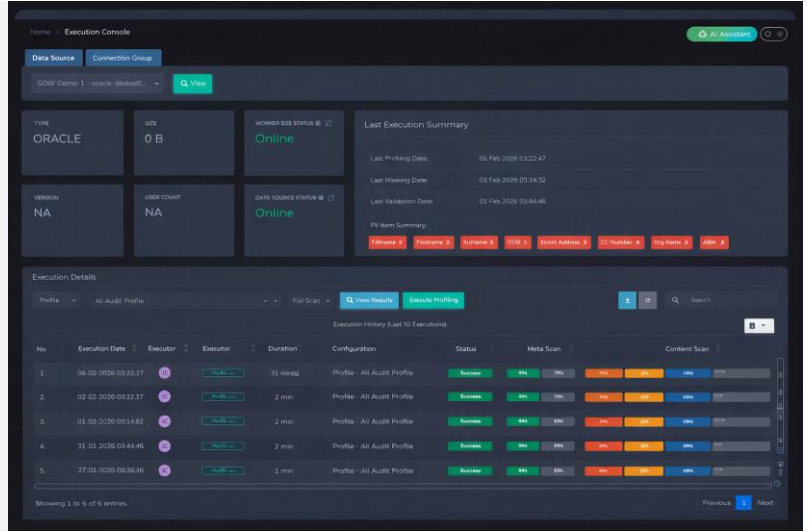
## The Enov8 TDM Solution

Enov8 Test Data Management provides automated capabilities to identify, secure, and manage sensitive data at scale. By replacing manual processes with AI driven profiling, masking, and validation, Enov8 improves data quality, strengthens compliance, and reduces risk. The platform enables consistent, governed data operations while accelerating delivery and supporting audit readiness across the enterprise.

# KEY FEATURES

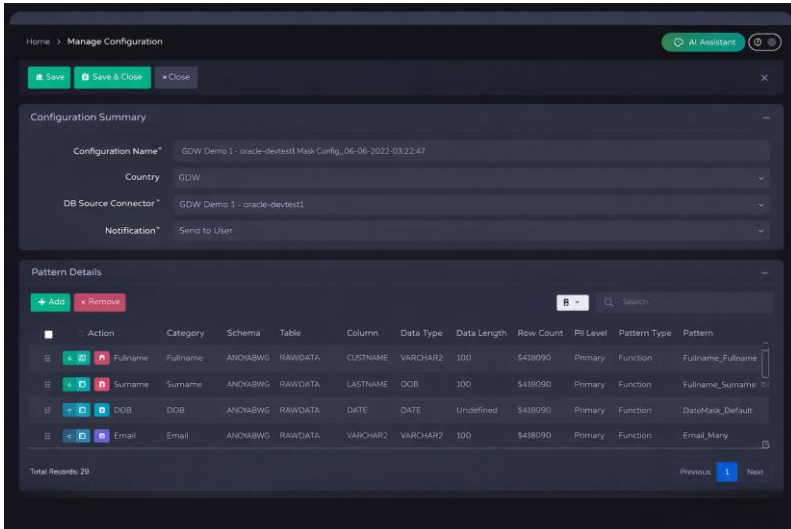
## DATA PROFILING

Use Enov8 Data Profiling to quickly identify PII and sensitive data across your environment. Automation and AI replace manual analysis, reducing errors and surfacing risks in real time. This enables stronger data security and faster remediation.



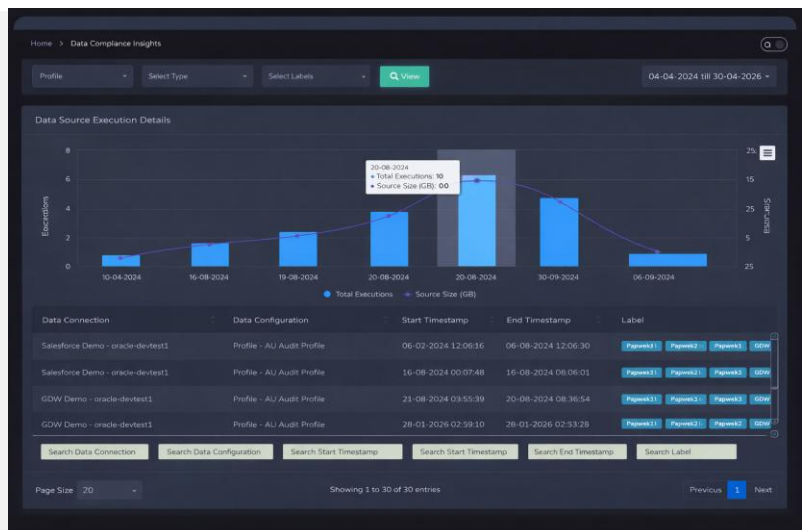
## DATA MASKING

Data masking transforms sensitive data into safe, usable test data by replacing confidential values with realistic but fictitious equivalents. Enov8 uses AI to automatically profile data and generate deterministic masking routines, removing manual effort. These routines can be repeatedly applied to keep data secure as it is refreshed.



## DATA VALIDATION

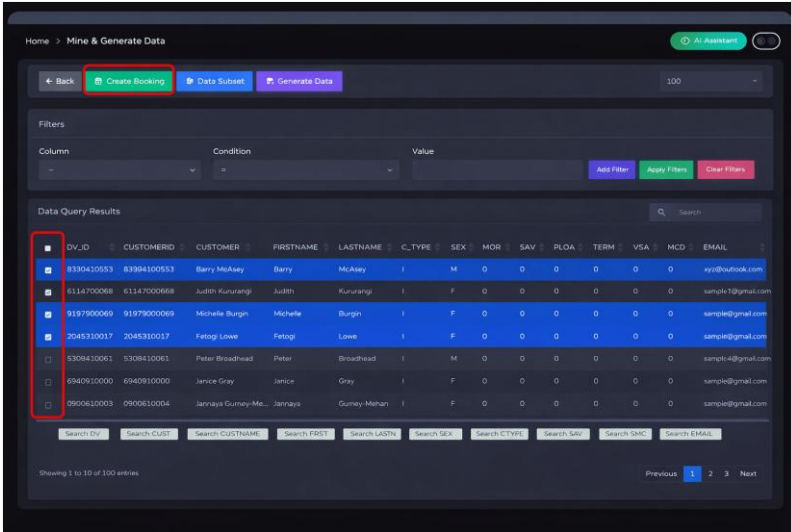
Data validation ensures data remains accurate, consistent, and compliant alongside masking and security controls. Enov8 uses machine learning to validate data quality and confirm the effectiveness of security processes, helping maintain reliable data that meets regulatory requirements.



# KEY FEATURES

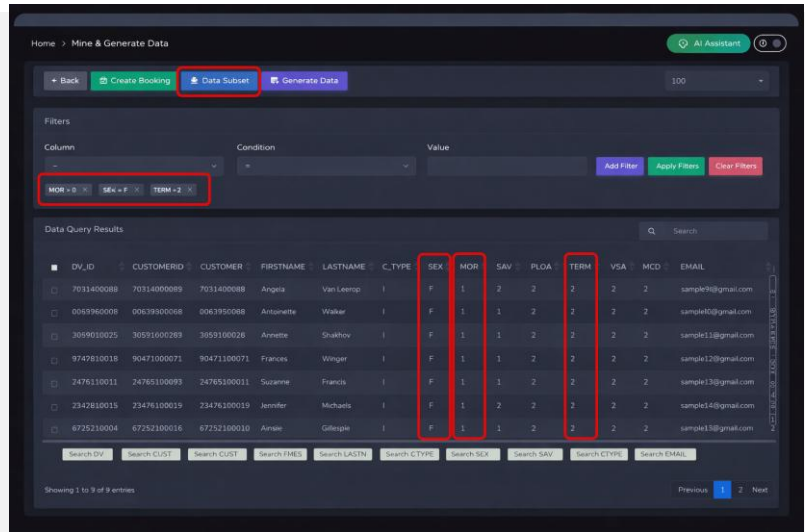
## TEST DATA RESERVATIONS

Enov8 Test Data Reservation ensures the right data is available when needed while preventing conflicts across teams. It centralizes data access without complex SQL or spreadsheets and allows datasets to be reserved for single use, reducing overlap, data corruption, and rework.



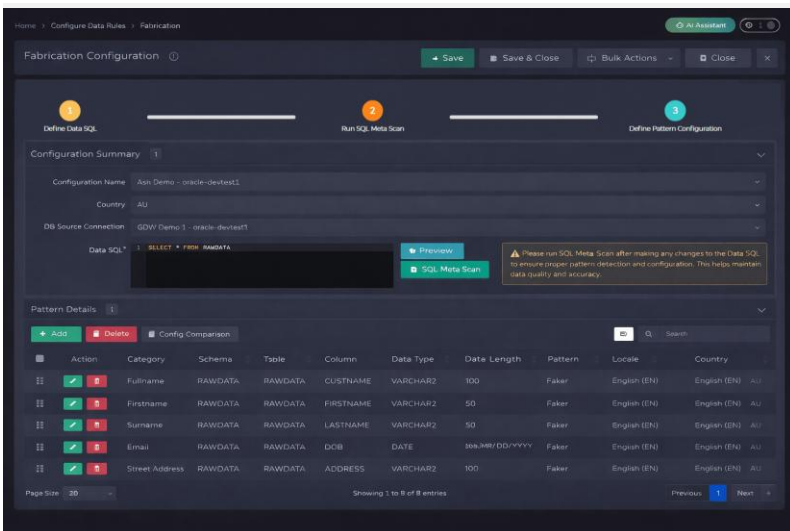
## DATA SUBSETTING

Enov8 Data Subsetting extracts smaller, targeted datasets that retain referential integrity and business context. This reduces data volume, speeds up environment provisioning, and delivers compliant, high quality test data without relying on full production copies.



## DATA SYNTHETICS

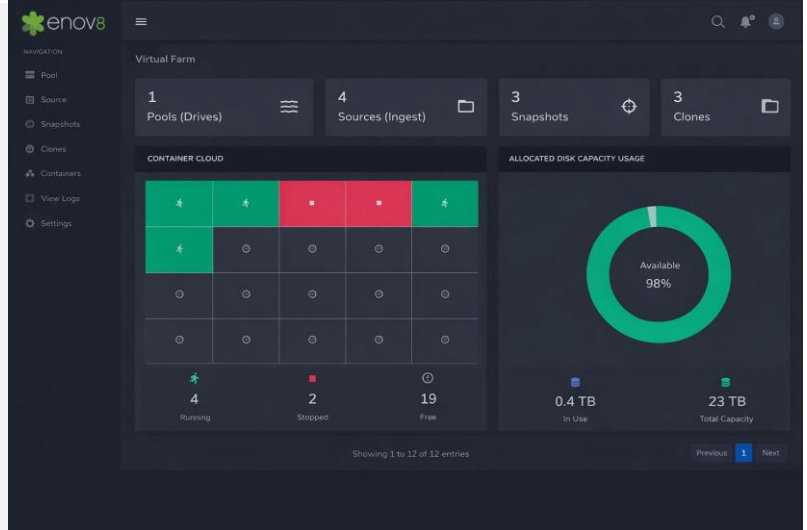
Enov8 Data Synthetics creates production like test data without relying on real datasets. It preserves structure and relationships while reducing volume, enabling faster provisioning, lower infrastructure cost, and compliant, high-quality data for testing.



# KEY FEATURES

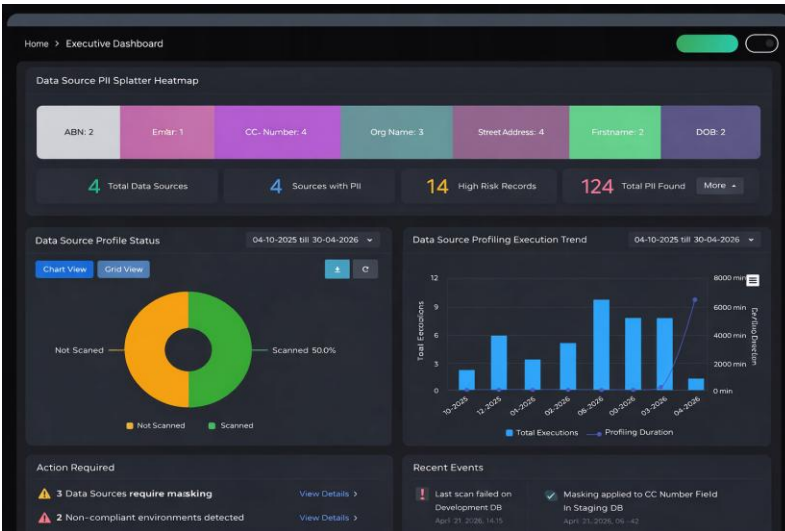
## DATABASE VIRTUALIZATION

Enov8 DB Virtualization creates lightweight virtual database copies that are significantly smaller and provisioned much faster than full clones. It removes the need for full duplication while maintaining data integrity, enabling on demand environments, lower infrastructure cost, and faster testing.



## DATA INSIGHTS

Enov8 Data Insights provides real time visibility into test data usage, coverage, compliance, and risk. With out of the box analytics and customizable views, it enables better decision making, stronger governance, and continuous optimization across test environments.



## SUPPORTED DATA SOURCES



Enov8 TDM supports leading enterprise data sources, including AWS Redshift, flat files (delimited and fixed width), IBM DB2, MariaDB, MS SQL Server, MySQL, Oracle, PostgreSQL, Sybase, and more.