



TEST DATA MANAGER

The Data Securitization and Test Data Management platform.

Key Benefits

Go Fast & Be Secure!

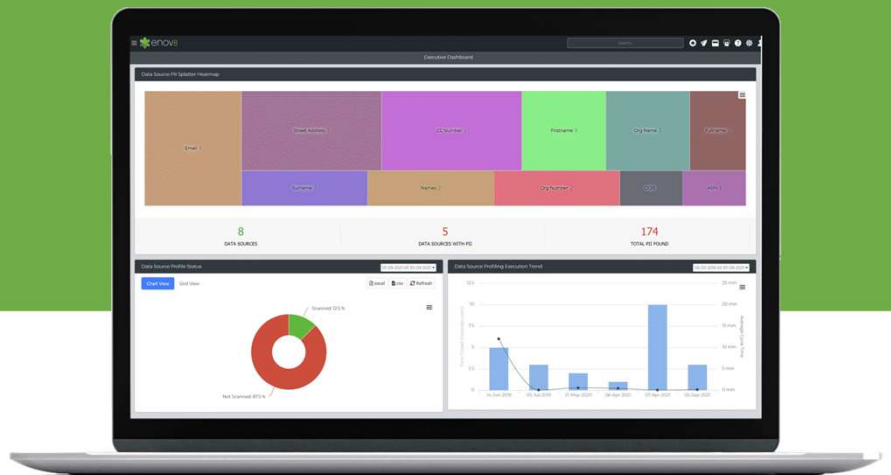
DEVSEC

- ✓ Understand your Data
- ✓ Easily Identify Risk
- ✓ Automate Securitization
- ✓ Deliver Compliance Insights

DEVOPS

- ✓ Automate Data Ops
- ✓ Rapidly Mine Test Data
- ✓ Avoid Data Contention
- ✓ Clone Data (Virtualize)

www.enov8.com



DEVSECOPS YOUR TEST DATA & PRIVACY RISKS.

The Enov8 TDM platform helps you identify where data security exposures reside within your production data, rapidly remediate these risks to avoid data breaches, and centrally validate your compliance success.

The solution also comes with IT delivery accelerators, including data DevOps, data synthetics, data mining & test data booking management.

WHO NEEDS ENOV8?

The Enov8 TDM solution is for any team requiring better knowledge & control of their platform data.

This includes:

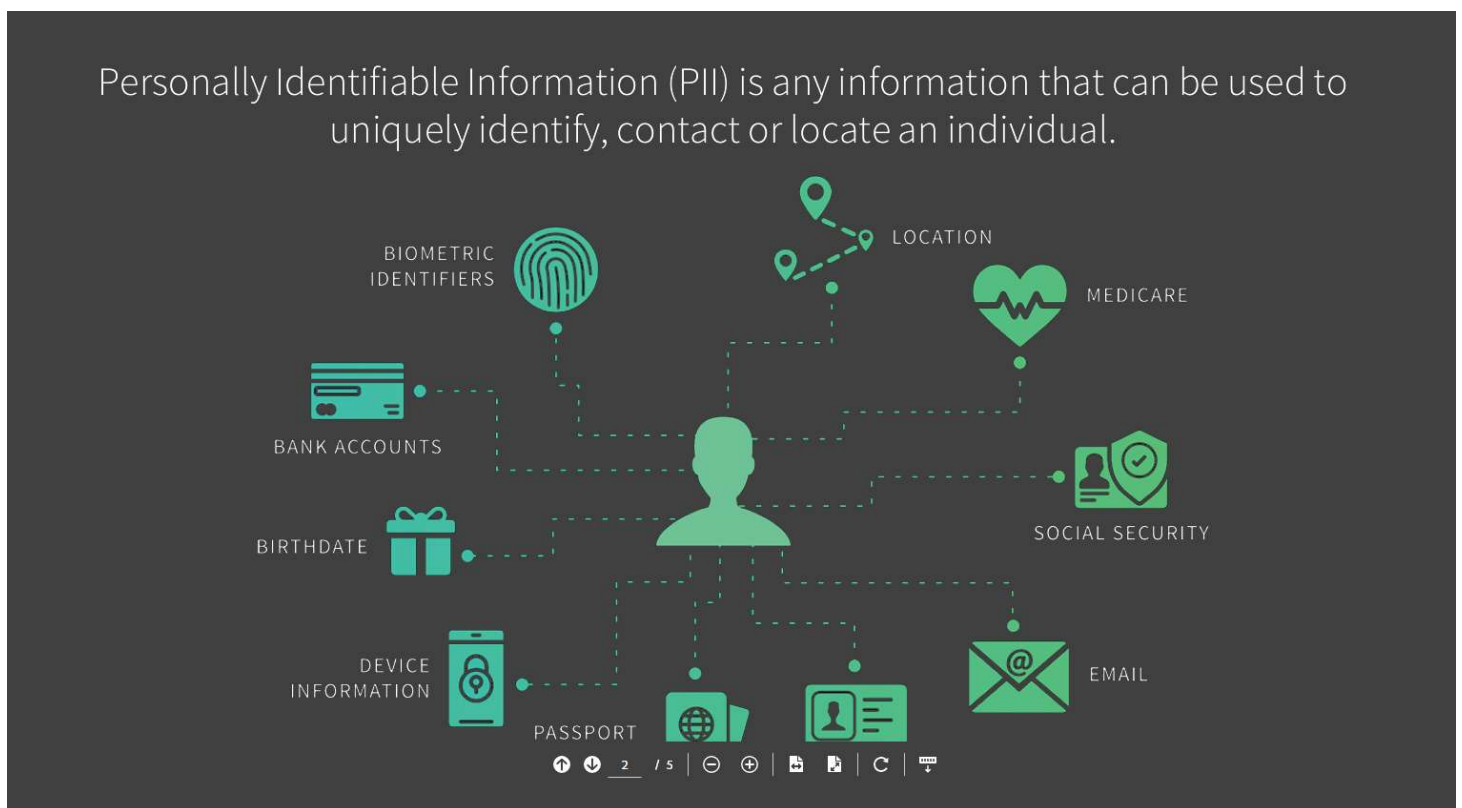
- ✓ Data Security Teams
- ✓ Compliance Officers
- ✓ System/Product Teams
- ✓ Test Data Management
- ✓ Test Environment Mgmt
- ✓ Deployment Teams

And ultimately protects your business & supports the broader IT Project community, including Development & Test.

The Problem Statement

IT Projects need “production-like” data to effectively develop and test platform changes. However, that introduces “compliance” challenges, as independent of location or industry, organisations are responsible for ensuring that individuals data i.e. PII (Personally Identifiable Information) is continually protected from disclosure or misuse.

The consequence of not complying to “privacy acts” is significant both financially & reputationally. *Privacy Acts including: APRA, GDPR, PDPO, PDPA, HIPPA, FCRA, ECPA etc.*



Data Privacy Considerations

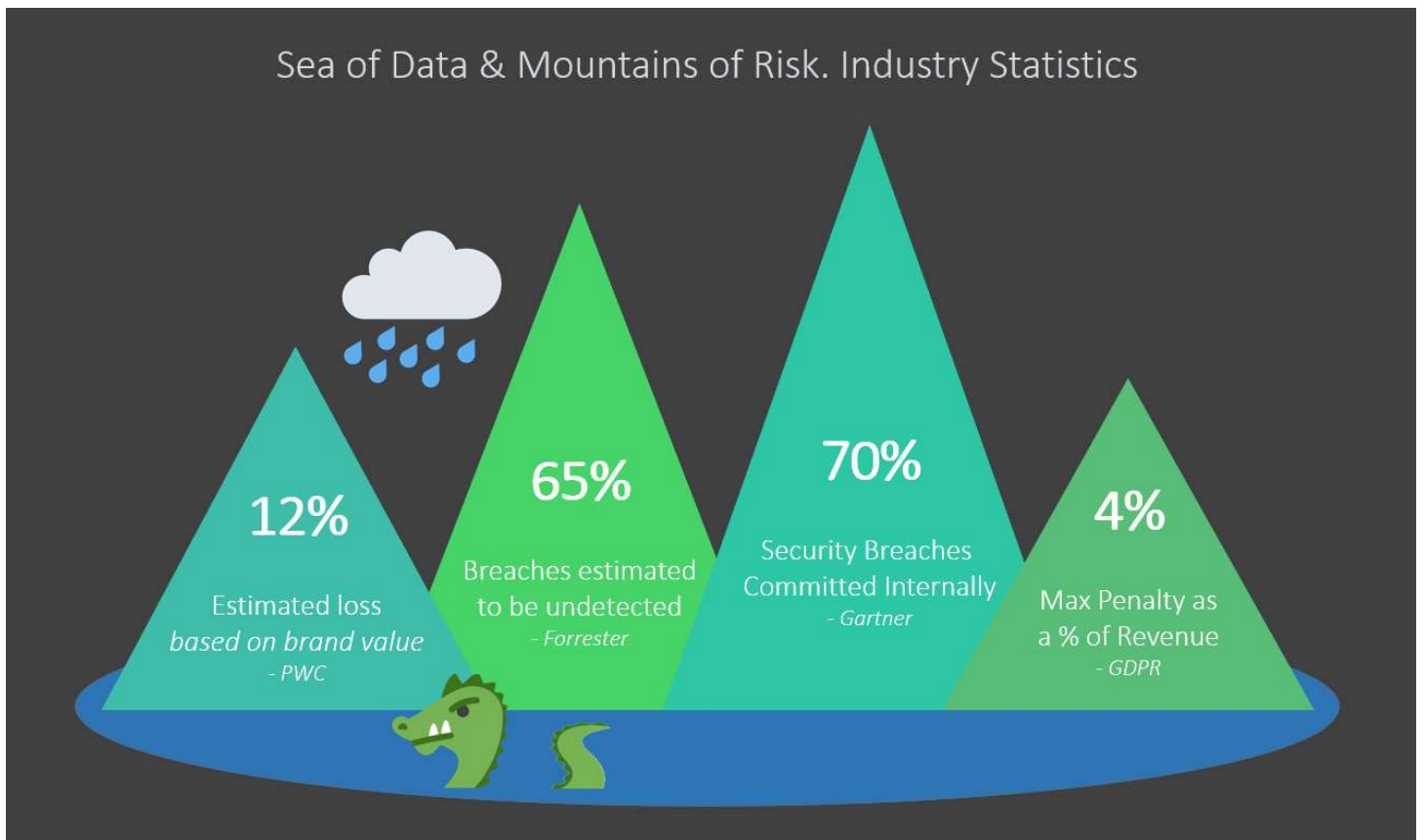
Key reasons you need to protect your data and the information it contains.

- Loss of data can have significant impact on individuals (customers).
- Mismanagement can lead to “compliance” penalties (fines & Sanctions).
- Companies are exposed to financial risk (brand damage & lawsuits).
- Regulations are continually changing & evolving.
- Information breaches are becoming more and more common.

The Challenge

Data is complex & identifying & addressing data security exposures are nontrivial.

- Platform are inherently large & complex (seas of data, billions of data points)
- Risks are often well hidden (needles in haystacks).
- Data security operations are manual (and therefore error prone & expensive).
- Remediation takes times (usually months of analysis and engineering effort)
- Success depends on competence of Industry Statistics engineers, platform SMEs & often luck .



The Enov8 TDM Solution

Enov8 TDM helps organizations address their Test Data & Data Compliance need by providing a set of features (automated capabilities) that replace traditionally manual “Data Management “ methods. TDM features streamline IT data operations, ensure quality through consistency and uplift compliance, security & audit.

KEY FEATURES

DATA PROFILING

Use Enov8's "AI" based Data Profiling module to automatically understand your data and identify risks.

For example: "Personally Identifiable Information" (PII) or other sensitive Data types.

Connection Name	Schema	Table Name	Column	Data Type	Data Length	Suggested Content Type	Row Count	Meta	Content	Matching Data	Random Data	Error Details
GDW Dev MySQL	performance	bigjob	id	--	--	--	--	Not Found	Not Found	View	View	
GDW Dev MySQL	performance	bigjob	Surname	--	--	Firstname	--	Found	Primary	View	View	
GDW Dev MySQL	performance	bigjob	Firstname	--	--	Firstname	--	Not Found	Primary	View	View	
GDW Dev MySQL	performance	bigjob	Firstname	--	--	Firstname	--	Found	Primary	View	View	
GDW Dev MySQL	performance	bigjob	email	--	--	Email	--	Found	Primary	View	View	
GDW Dev MySQL	performance	bigjob	DOB	--	--	--	--	Not Found	Not Found	View	View	
GDW Dev MySQL	performance	bigjob	org	--	--	Organization	--	Not Found	Secondary	View	View	
GDW Dev MySQL	performance	bigjob	phone	--	--	--	--	Found	Not Found	View	View	
GDW Dev MySQL	performance	bigjob	address	--	--	Address	--	Not Found	Primary	View	View	
GDW Dev MySQL	performance	example_sfn_sch	id	--	--	--	--	Not Found	Not Found	View	View	
GDW Dev MySQL	performance	example_sfn_sch	alias	--	--	--	--	Not Found	Not Found	View	View	
GDW Dev MySQL	performance	example_sfn_sch	sch	--	--	--	--	Found	Not Found	View	View	

DATA MASKING

Avoid slow, error-prone security engineering by using Enov8 Data Masking to build consistent & cross-platform data securitization routines.

Once generated, you can run your masking routines whenever new data arrives.

Compare	Configuration Name	Data Source	Type	Label	Default	Status	Action
<input type="checkbox"/>	GDW Masking Config	GDW Dev MySQL	MySQL		False	Active	Stop Start Delete
<input type="checkbox"/>	GDW Dev MySQL Mask Config	GDW Dev MySQL	MySQL		False	On Hold	Stop Start Delete
<input type="checkbox"/>	Ash Demo - oracleenov8.com Mask Config	Ash Demo - oracleenov8.com	ORACLE		False	Active	Stop Start Delete
<input type="checkbox"/>	Ash Demo - oracleenov8.com Mask Config_07-04-2021-12-42-48	Ash Demo - oracleenov8.com	ORACLE		False	On Hold	Stop Start Delete
<input type="checkbox"/>	Oracle Demo Mask Config_16-01-2022-12-21-36	Oracle Demo	ORACLE		False	Active	Stop Start Delete
<input type="checkbox"/>	GDW Dev Mask Config_22-05-2022-00-19-08	GDW Dev	ORACLE		False	On Hold	Stop Start Delete
<input type="checkbox"/>	Salesforce L1AT Mask Config_22-03-2022-00-19-35	Salesforce L1AT	ORACLE		False	On Hold	Stop Start Delete

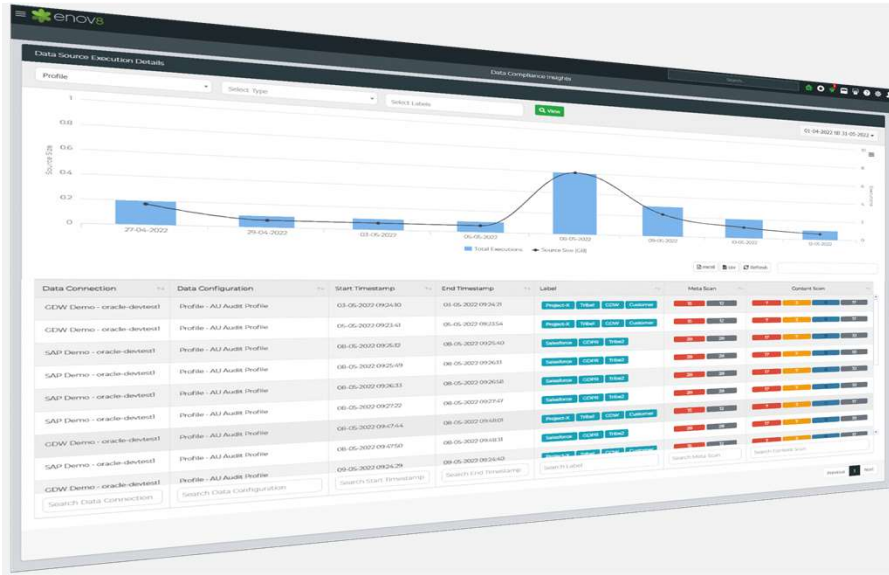
DATA VALIDATION

Understanding and Masking data is not enough. It's also important to validate that the security process was effective.

Use Enov8 Data Validation to prove the production patterns have been removed.

Connection Name	Schema	Table Name	Column	Data Type	Data Length	Production Like	Prod Pattern Threshold	Error Details
GDW Dev MySQL	performance	mytable	Address3	--	--	0%	Not Found	
GDW Dev MySQL	performance	perf_cities	city	--	--	0%	Not Found	
GDW Dev MySQL	performance	sanctity	CUSTOMER	--	--	0%	Not Found	
GDW Dev MySQL	performance	perf_fnc_names	First Name	--	--	48.0%	Not Found	
GDW Dev MySQL	performance	sanctity	ESSNAME	--	--	99.8%	Found	
GDW Dev MySQL	performance	bigjob	Firstname	--	--	46%	Not Found	
GDW Dev MySQL	performance	mytable	FirstName	--	--	20.5%	Not Found	
GDW Dev MySQL	performance	namesnames	Name	--	--	46.2%	Not Found	
GDW Dev MySQL	performance	sanctity	ORGNAME	--	--	0%	Not Found	
GDW Dev MySQL	performance	perf_cities	Region_2sg	--	--	0%	Not Found	
GDW Dev MySQL	performance	bigjob	Surname	--	--	0%	Not Found	

KEY FEATURES



COMPLIANCE REPORTING

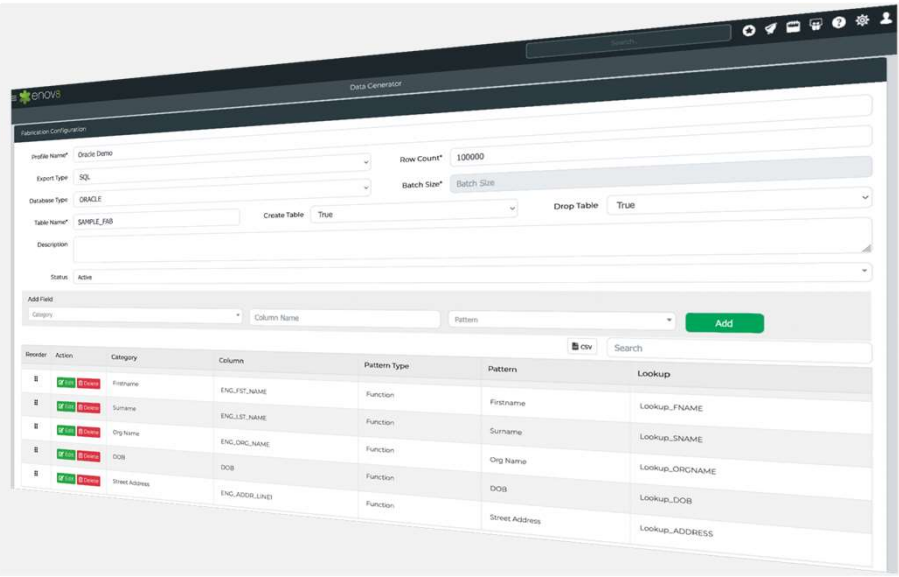
Track & demonstrate your compliant with industry privacy regulations.

Enov8 provides real time compliance insights, dashboards & reports, that support your security, compliance, audit, and testing teams.

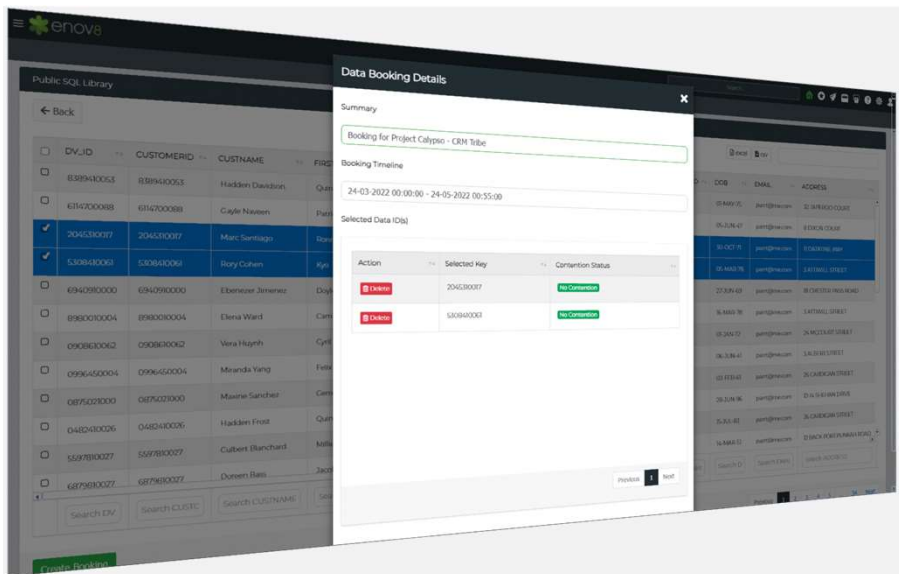
DATA FABRICATION

Fake data is often essential when you can't find fit-for-purpose data in your Development, Test or production environments.

Use Enov8 Data Fabrication to create realistic synthetic data to fill the gap.



TEST DATA BOOKINGS



Find data quickly & avoid the risk of data contention i.e., other users using that data.

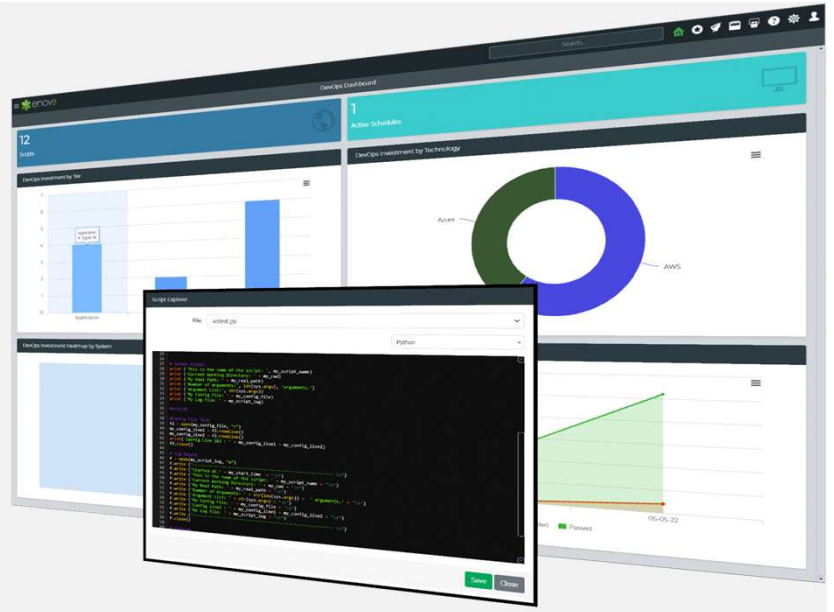
Enov8 Test Data Booking Management provides your teams with rapid test data mining & test data reservation methods.

KEY FEATURES

DATA DEVOPS

Don't let DevOps leave your Data Operations behind.

Enov8's DataOps module provides a framework for automating, and integrating, your data operations & making them available through CI/CD, schedules or self-service.



DATA CLONING



Leverage Enov8 vME technology to quickly snapshot & provision "inexpensive" (tiny) copies of your data to Dev, Test & Production Support.

- X10 Smaller x100 Faster

Note: vME, virtualize me, is a standalone Data Virtualization technology provided free with Enov8 TDM.

SUPPORTED DATA SOURCES



Enov8 TDM supports the worlds most popular data sources, including AWS Redshift , Flat Files (Delimited & Fixed Width), IBM DB2, MARIADB, MSSQL, MYSQL, Oracle , Postgres, Sybase & more.

enov8.com