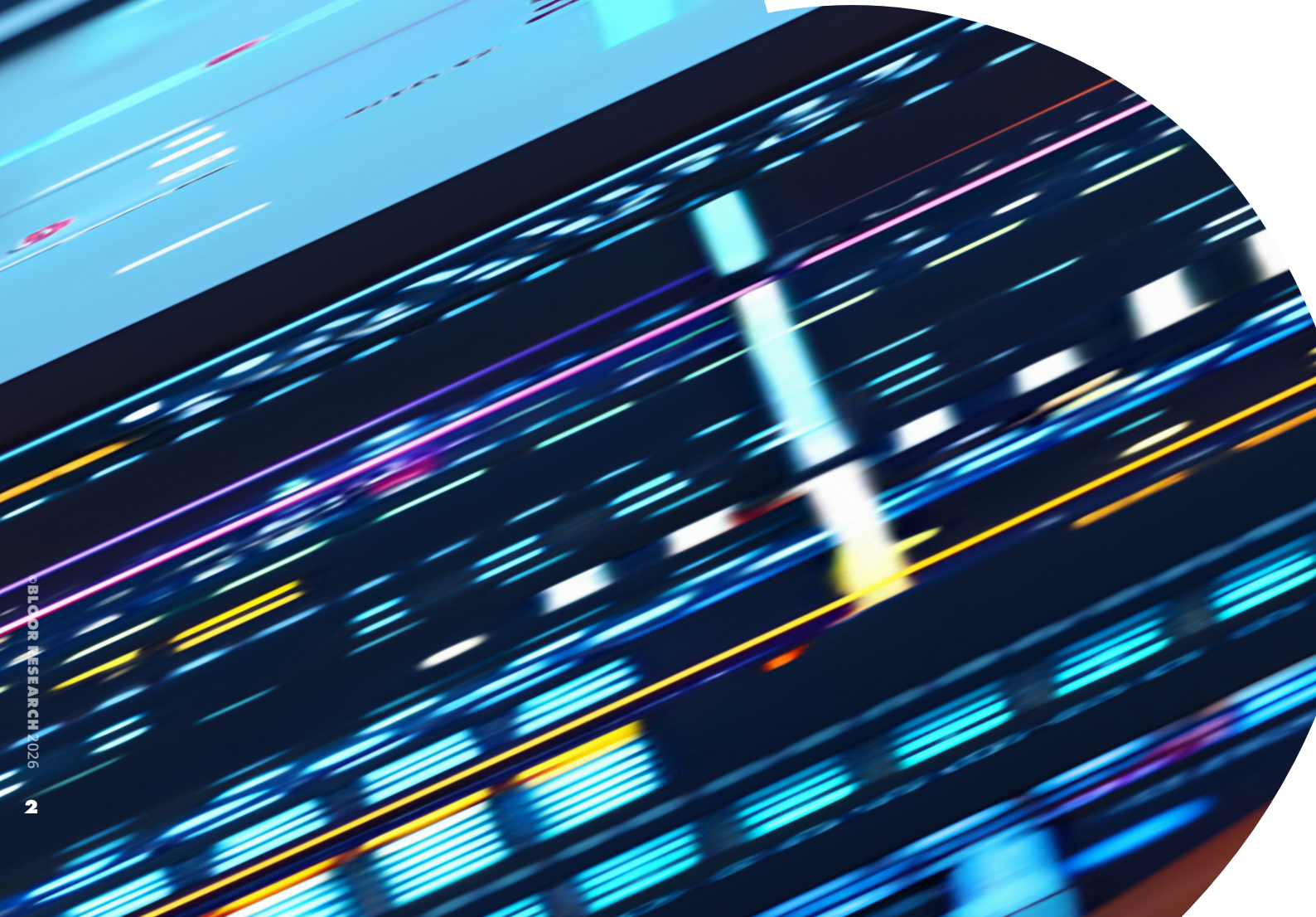
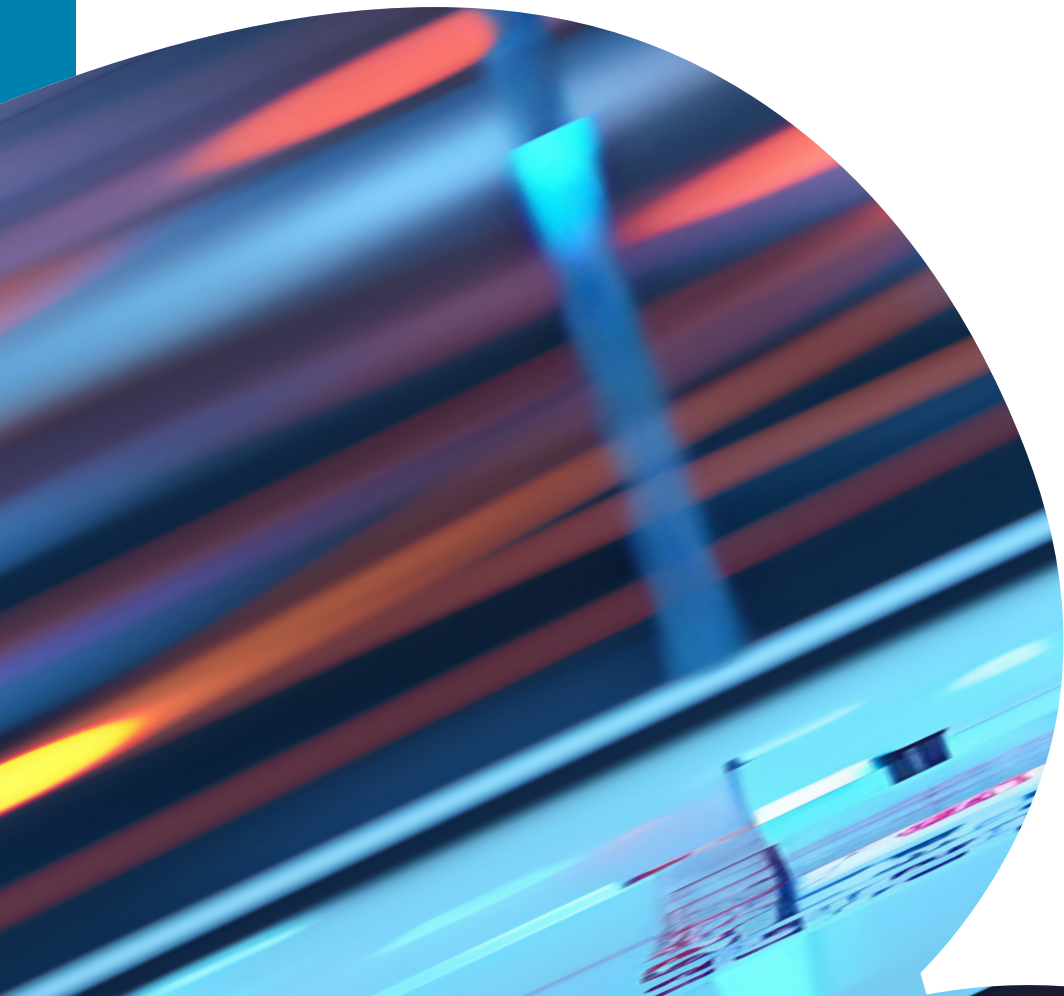


Author  
**DANIEL HOWARD**

Bloor Research  
**IN DETAIL**

**MAY 2026**

# **Enov8 Enterprise Intelligence**



# Executive summary

Enov8 Enterprise Intelligence combines the capabilities of the company's Environment Manager, Release Manager, and Test Data Manager products to create a broad platform for managing, monitoring, and automating your IT systems and both production and testing environments. In doing this, it creates a centralised "control tower" for your software development lifecycle, providing you with the means to govern it holistically and with confidence.

The upsides of this approach are numerous. For instance, by surfacing and exposing only the most important and relevant information (via, say, tailored dashboards), it allows users at every level of your organisation to know what they most need to know about your IT systems, increasing their understanding (thereby enhancing decision-making) and enabling collaboration without overwhelming them with extraneous information. This information can be leveraged further, with help from the platform, to minimise costs and ensure compliance. Furthermore, the automation offered by the platform (driven partially by agentic AI) can considerably accelerate your software development in and of itself.

In addition, Enterprise Intelligence is highly integrable, allowing you to use it alongside a variety of other tools and products. Indeed, this quality – in addition to the above – makes it well-suited for acting as a comparatively stable, central point in your IT architecture, from which you can orchestrate your other solutions. This means that it can be deployed not just as a robust intelligence and governance solution, but as a key component in a mutable and adaptable software environment.

## Fast Facts

- Enov8 Enterprise Intelligence comprises 3 products: Environment Manager, Release Manager, and Test Data Manager.
- Each of these products provides insights and governance capabilities for its respective part of the software delivery lifecycle, across both production and non-production environments.
- Information is typically presented through tailored, highly visual dashboards. Other methods – such as diagrams or pipelines – are used when appropriate.
- Automation and agentic AI can be leveraged throughout to accelerate your software pipeline and reduce your manual workload.
- Taken as a whole, Enterprise Intelligence acts as a central and highly integrable location for governing and orchestrating your software development lifecycle.

## Key Findings

In the opinion of Bloor Research, the following represent the key features of Enov8 Enterprise Intelligence:

- The Enterprise Intelligence platform provides a central, unified location for understanding (and governing) all aspects of your software development lifecycle. Moreover, it surfaces a substantial amount of relevant intelligence that is tailored to provide each user with the information they need without overwhelming them. This is accomplished both through customisable dashboards as well as visual pipelines, diagrams, and so on.
- Enterprise Intelligence is compatible with a variety of other tools via its integration layer. This fact, combined with its orchestration capabilities, make it well-suited to act as a central point from which to deploy and manage not just your IT systems, but software solutions in general. This can help you to create a flexible and adaptable – in a word, a mutable – software environment, wherein your tools can be deployed consistently and at scale, across your enterprise, and updated or replaced whenever necessary.
- The platform makes significant use of automation and agentic AI to accelerate your software development processes. Moreover, its use of agentic AI comes with an AI governance solution for ensuring that your agents work well and in a compliant fashion.
- While Environment and Release Manager are competent solutions in their own right, we are particularly impressed by Test Data Manager. We especially like the range of options it offers, enabling it to cover every major aspect of test data management. This includes sensitive data discovery, data masking, synthetic data generation and database virtualisation.

## The bottom line

Enov8 Enterprise Intelligence offers a comprehensive, centralised view of your software development lifecycle, which it parlays into management, governance, orchestration, and automation of the same.

# The products

Enov8 Enterprise Intelligence is a product ecosystem consisting of 3 primary products: Environment Manager, Release Manager, and Test Data Manager. While some other products, such as VirtualizeMe (“vME”) exist, and are available both separately and as part of said ecosystem, they still fall under the umbrella of one of the aforementioned 3 products, as shown in *Figure 1*.

As their names suggest, these products are designed to manage, orchestrate, and provide insights for your production and test environments, your product releases, and your test data, respectively. While they can be deployed standalone, they have clearly been designed to be deployed together. This produces a unified, end-to-end

governance, orchestration and management solution for your software development lifecycle that helps to mitigate the complexity of modern software development, in turn increasing your operational efficiency, reducing waste, minimising compliance risk, and other such things.

To wit, the 3 products are built on the same base engine, and each leverage the same unified orchestration and integration layers for interacting with the rest of your toolchain. Moreover, they can be used to synthesise your software development lifecycle with application portfolio management, allowing the latter to guide the former and act as a strategy layer that extends from software development and testing all the way to delivery.

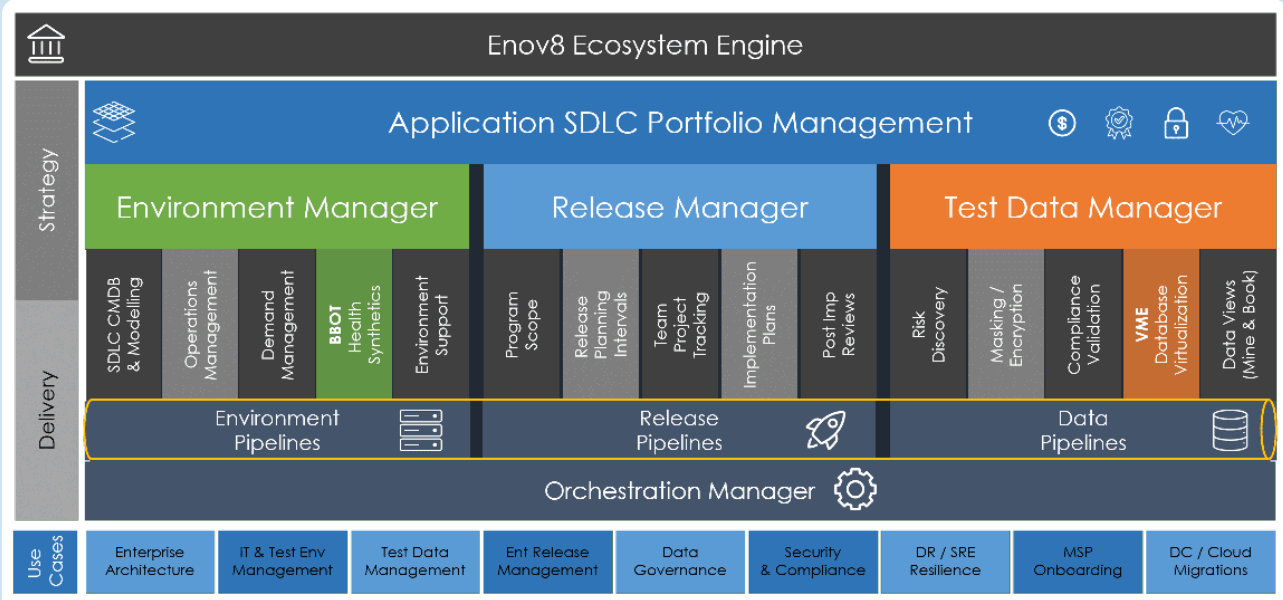


Figure 1 – Enov8 Enterprise Intelligence architecture

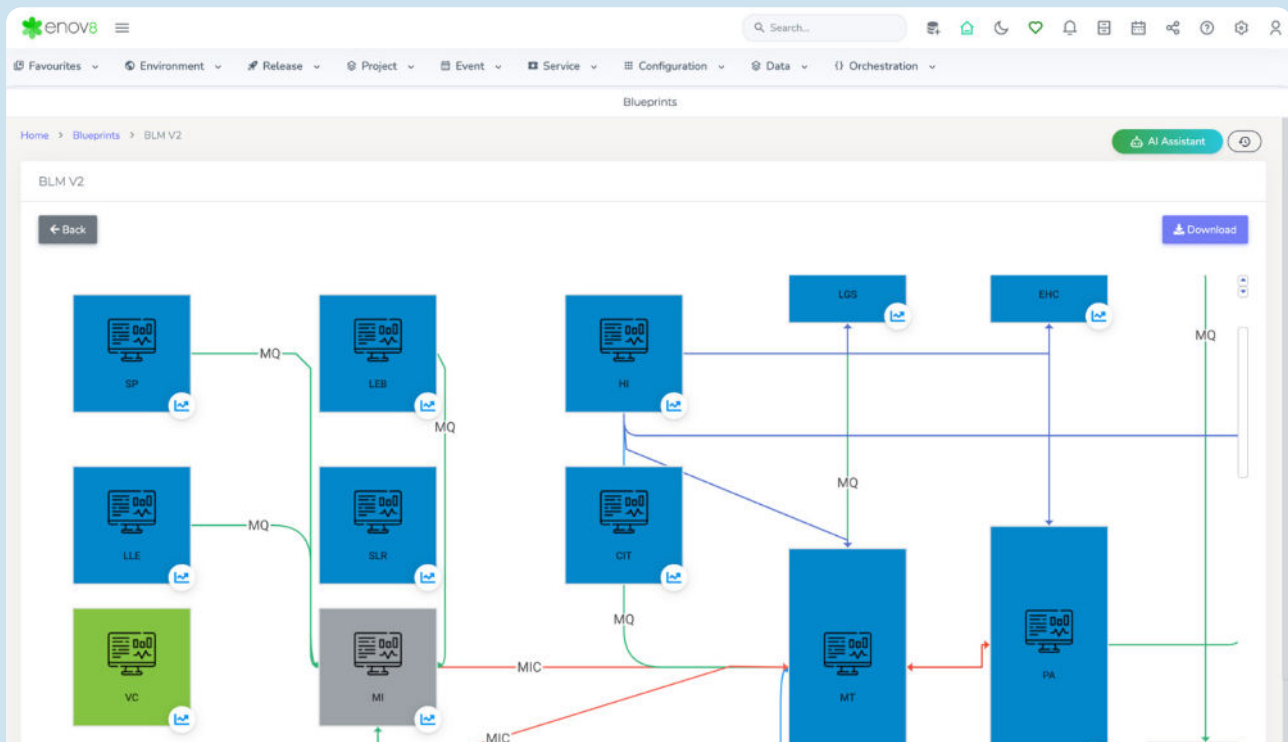


Figure 2 – Enov8 Environment Manager architectural blueprinting

## Environment Manager

Enov8 Environment Manager is a product designed to help you manage both your production and test environments, primarily in the form of environment governance, insight, and collaboration. It thereby helps you avoid the delays, poor quality, and unnecessary costs associated with poor (or no) management of the same.

Environment Manager provides a visual modelling tool that allows you to create architectural blueprints for your environments and applications (see [Figure 2](#)). These blueprints provide dynamic and real-time visualisations of your IT systems, and hence offer a comprehensive and constantly up-to-date view of them. In turn, they can both bolster understanding of your system and help identify opportunities to improve it.

As well as the current state of your system, these diagrams can be used to model potential future states of it. In fact, they come with impact analysis and change management features for this exact purpose. They are also capable of modelling business processes and/or IT services, providing the same advantages and features described above but in a somewhat different context.

For configuration management, Environment Manager offers a configuration management database. This acts as a centralised repository for capturing and classifying

a wide variety of information about your IT environment, providing a comprehensive and holistic view of it that can be used as a single source of truth. Moreover, this database is designed to seamlessly integrate with your software development lifecycle.

Environment Manager also offers several further means of capturing and exposing environment information in an approachable and user-friendly way. Among other things, it offers application fact sheets, which provide security, compliance, and tech trend data, designed to enhance stakeholder decision making; customisable environment dashboards for every level of your organisation, up to and including the c-suite; and real-time delivery of environment health and versioning information.

Moreover, it features several components designed to help coordinate your various users working with your IT environments. These include release and environment calendars that come with interactive scheduling, an environment booking system, and a centralised ticketing process. In addition, the insights exposed by Environment Manager can improve collaboration in and of themselves, simply by spreading knowledge and improving user understanding.

## Release Manager

Enov8 Release Manager offers visibility and governance for your product releases, helping you to minimise delays, costs, and quality issues that can damage customer satisfaction and your bottom line. To this end, it provides end-to-end release planning, dependency visibility, and alignment across your development, operations, and testing teams come release time.

To start with, Release Manager exposes significant amounts of information about your releases, both past and future. It can track future release progress and readiness, including dependencies, at both the project and product level; it provides executive-level views of past releases, including release type, RAG status, test results, and associated systems, events, bookings, teams, and so on; it can analyse prior project and release performance, with an eye towards continuous improvement and post implementation review; and it offers dashboards, powered by real-time analytics, designed for monitoring release progress, identifying bottlenecks, and enhancing pre- and post-release decision-making. Needless to say,

this represents a substantial wealth of knowledge at your fingertips both before and after each of your releases.

What's more, Release Manager is built to help you release consistently and painlessly, and a large part of that is providing robust collaboration tools that allow your various product teams to do their work – and make their releases – without stepping on each other's toes. To this end, the product offers a variety of features: release master planning (displayed in [Figure 3](#)), for aligning releases between different products and teams, as well as the development, testing and deployment cycles that make up each release; interactive planning tools and release calendars that allow you to schedule and share critical events and dates; and demand management capabilities, for optimising environment usage and prevent deployment conflicts, including environment and system booking functionality. Standardised implementation plans provided by the product, including structured deployment plans and step-by-step execution run sheets, also serve to make your releases more stable and predictable.

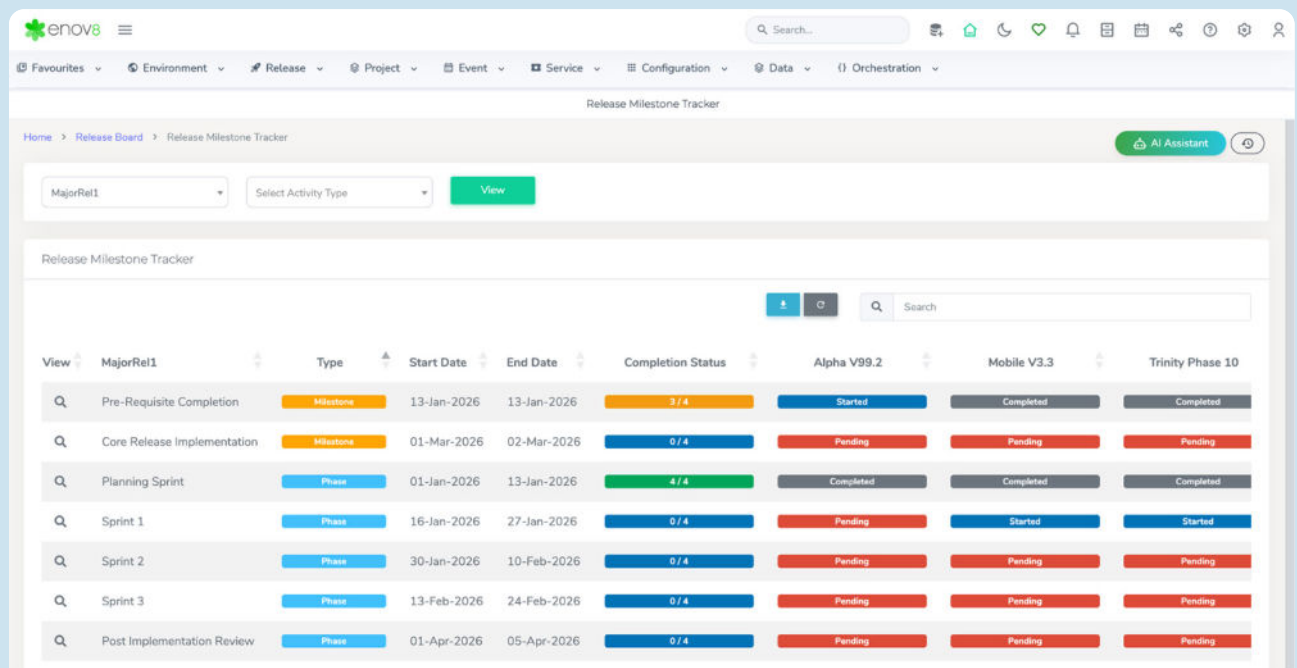


Figure 3 – Enov8 Release Manager release master planning

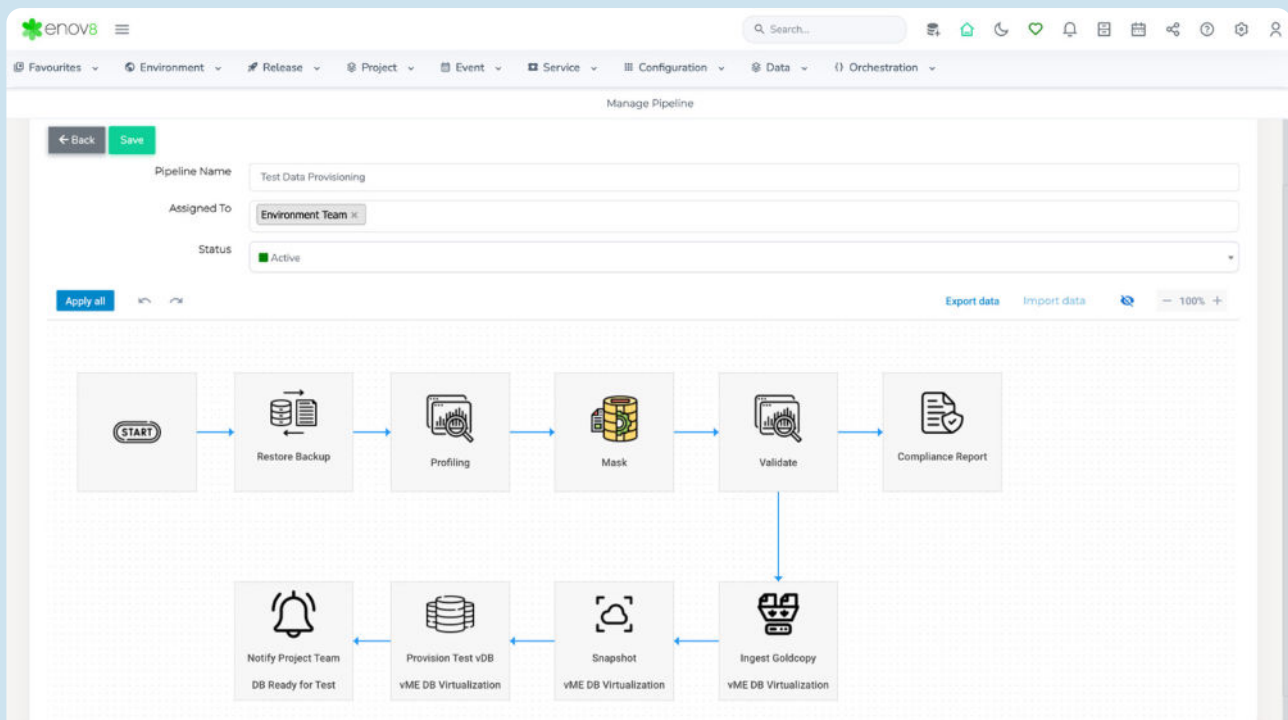


Figure 4 – Enov8 Test Data Manager automated data pipeline

## Test Data Manager

Test Data Manager, as its name implies, is designed to help you manage your test data. It uses automation to simplify, systematise and accelerate your test data management processes and address common issues like test data bottlenecks and privacy. In particular, it offers solutions for two major aspects of test data management: firstly, data security and regulatory compliance, delivered via automated data profiling, data anonymisation, and compliance validation; and secondly, test data agility and DataOps acceleration, provided via synthetic data generation, test database orchestration (of either traditional test databases or virtualised database clones), and continuous test data provisioning. Moreover, like its sister products, it provides significant visibility into your test data processes, which are exposed to your users via tailored dashboards.

Data profiling (and thence sensitive data discovery) is accomplished using data content and/or pattern matching, with various preset patterns and configurations available. Profiling will associate a recommended anonymisation method to a given field, which is typically data masking (replacement with synthetic, production-like data whilst maintaining referential integrity across data sources) but could also be encryption, complex ciphering, random or fixed variance (for numerical fields) or fixed value replacement (which is to say, everything is masked to the same thing). This recommendation can be followed or ignored at your discretion, and you can also implement your own anonymisation algorithms as Python functions, or use Python to extend or modify the built-in methods.

Synthetic data generation is available, and uses a similar methodology to data masking, except that instead of creating random data to replace production data, you create random data for its own sake. This is a useful, though somewhat

ancillary, feature that will be particularly relevant for testing new features, green field environments, and other scenarios where production data is not readily available.

These processes can be executed manually, regularly scheduled, or positioned within an automated pipeline (such as the one in [Figure 4](#)). Delta analysis and data validation are available after masking your data, with the latter in particular confirming both what percentage of values have been masked within each field and how production-like each field's masked data is. The latter is accomplished using distribution analysis, and is used to determine how closely your masked data resembles your production data. This is significant, as it helps you to create test data sets that are highly secure but retain the statistical properties of the original data, enabling you to test as if you were using the original data but without the accompanying privacy concerns.

Database virtualisation is available via VirtualizeMe (vME), available either as a standalone product or as part of Test Data manager. It allows you to rapidly create virtualised database clones with very small storage footprints, allowing personalised instances of each clone to be distributed to any and all of the relevant users. This has significant implications for test data management – among other things – as it enables you to test using all of your data without compromising your test speed. In turn, this provides complete test data coverage while preventing the formation of test data bottlenecks. Moreover, data profiling and anonymisation are typically actioned on a source copy of the production database from which your clones are derived, the effects of which are then carried forward to all such clones. This means that you only need to find and protect the sensitive data in a given source once (at least until the source is updated) and the sensitive data in every clone created from that source will also be protected.

# The solution

For Enov8 Enterprise Intelligence, it is not enough to consider its 3 constituent products in isolation.

While their features and capabilities are quite impressive, and all stand well enough as individual products, they are fundamentally designed to be used together, to create a singular, unified solution for software delivery lifecycle management. As such, we will now discuss the collective capabilities and advantages said solution provides.

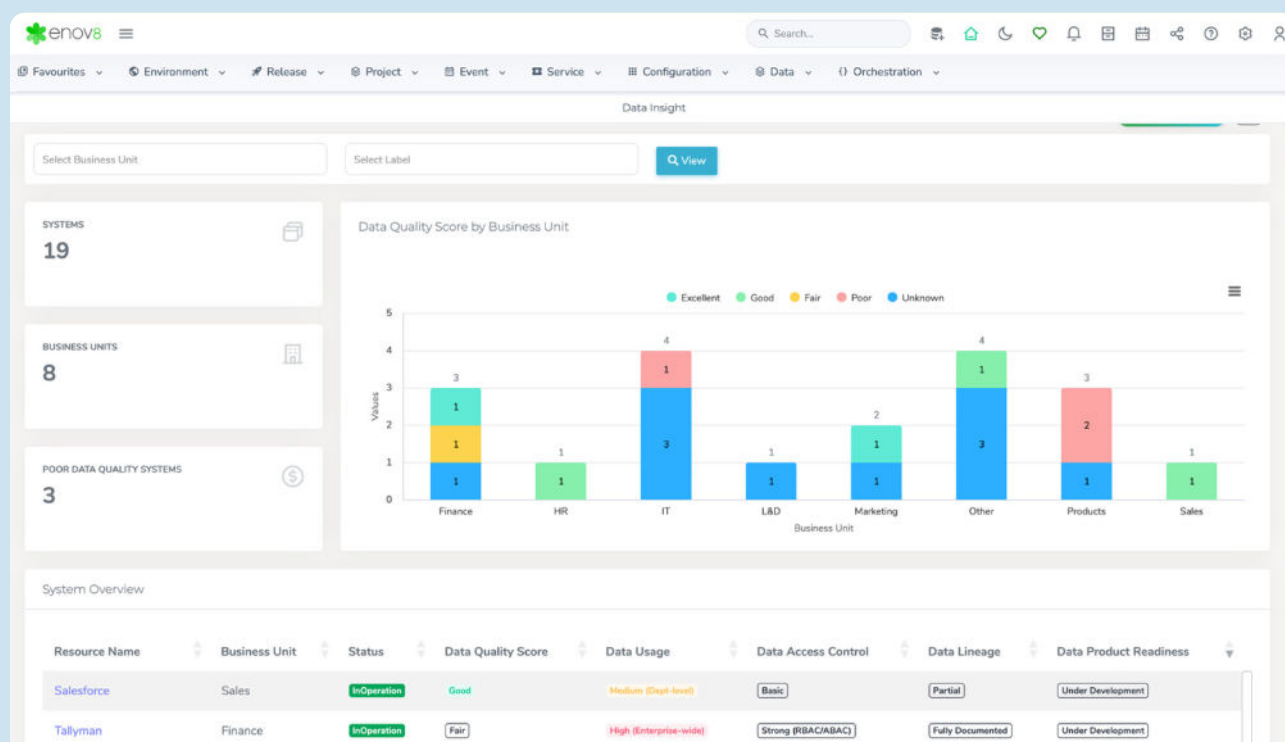


Figure 5 – Enov8 data insights information wall

## Insights and visibility

Each of the 3 primary Enterprise Intelligence products offers a variety of ways to expose important, relevant information to your users. What's more, they provide the means for your users to easily act on that information without stepping on the toes of your other users. We have already discussed several of these features, such as Environment Manager's architectural blueprinting and Release Manager's demand management, but we'll further demonstrate these capabilities by looking at Test Data Manager's in a little more detail.

To wit, Test Data Manager offers several features that expose important testing information and functionality. Moreover, these features can be tailored to users at every level of your organisation, from on-the-ground testers to the c-suite. For instance, it provides a selection of dashboards containing information about your test data, as well as related information regarding compliance, security, and so on. Enov8 refers to these dashboards as "information walls". They are available throughout Enterprise Intelligence, and one is shown in [Figure 5](#). Said information walls can be customised both for your organisation as a whole and by each user individually.

As a potentially separate product, additional dashboards are available for managing vME's database virtualisation capabilities. In addition, vME provides a file explorer for examining and manipulating the data used (or to be used) for database virtualisation, while Test Data Manager itself features a data library that allows your users to readily view, reserve, and download data (or collections thereof) for testing purposes, which we would expect to be particularly useful for test data mining and creating fit-for-purpose test data sets.

It should be obvious how these features serve to help your users understand your testing (and test data) processes. What's more, you can expect to find similar features in Environment and Release Manager, adapted to each product's subject matter. When taken as a whole, this provides a potentially enormous amount of intelligence about your software development lifecycle, but tailored and filtered in such a way that users only see the data that is relevant to them. This means that it is an intelligence solution equally for users with a narrow but highly technical remit, such as testing engineers, as for those whose remit is much broader, such as c-level executives (and, of course, all those in between). In addition, it means that application-level information, appropriately curated and imbued with meaning, can bubble up to the c-suite when it is appropriate for it to do so, exposing insights that might otherwise be trapped at the application level.

## Integration and delivery

One of the aims of Enov8's product suite is to solve the issues many organisations have with isolated DevOps tooling. It is common for different teams within an organisation to adopt similarly different tools, each team according to their own needs. Indeed, a tool one team is happily using may not even function in the environment another team is dealing with. In and of itself, this is no bad thing, but it becomes a problem at the organisational level when those teams need to work together. More often than not, the tools they are using are siloed off from each other and are unable to efficiently communicate: thus, neither are the teams using them.

Enov8 Enterprise Intelligence addresses this: it is an expansive, highly integrable platform that covers the breadth of the software development lifecycle, providing a stable base for tool adoption and implementation across both production and non-production environments. This allows you to deploy your preferred DevOps tools, at scale and throughout your organisation, while also providing a conduit through which those tools can communicate.

Moreover, the products comprising Enterprise Intelligence are typically able to operate across domains, including cloud and on-premises environments, while supporting a variety of the most popular relational and NoSQL databases. Some components, such as vME, are completely database and file type agnostic. The suite also contains a dedicated orchestration management layer, including automated pipelines for continually delivering insights and data assets to your users. Further, much of the suite's functionality is available via API, so you can easily integrate it with your existing DevOps processes and/or CI/CD toolchains.

## Centralisation

The insights and visualisation functionality offered by Enterprise Intelligence dovetail with the suite's integration capabilities (both of which we have just described) to form one of the platform's most potent selling points: the means through which to create a centralised, unified point of understanding and control for your software development lifecycle. This means that your software environments, releases, and testing are readily available to be examined, explored, and actioned against holistically, rather than separately.

Furthermore, through both the insights and integration Enterprise Intelligence provides, it can help you to organise and orchestrate your other tools, providing a framework for both optimising usage of your existing tools and harmoniously introducing new tools into your system. In effect, it can act as a sort of control tower for your software development lifecycle, a central point from which to both derive insights and take action. Importantly, those insights typically provide both data and an interpretation of that data, offering real knowledge about your system rather than just raw figures.

## Agentic AI

Last, but hardly least, Enterprise Intelligence makes significant use of agentic AI to enhance its functionality. It is primarily used to increase automation: to execute workflows, coordinate between different tools, accelerate delivery pipelines, and so on. It also provides an AI assistant, a chatbot which can be used to interact with the product suite using natural language (for example, to generate technical assets).

What's more, the suite provides a unified view of your in-use AI agents, as well the means to monitor and govern them: for example, see the AI governance dashboard in [Figure 6](#). Notably, it will compare agent performance

against a variety of key performance indicators, which could cover strategic alignment, value realisation, model maturity, model risk, or what have you, on an agent-by-agent basis that ultimately results in each agent being assigned a score out of 100. In this way, it allows you to monitor your agents for potential issues, both in terms of raw performance or – more importantly – compliance, security, and technical risk (or, for that matter, active non-compliance). As agentic AI grows in popularity and adoption, this sort of governance capability will only become more essential, and we are glad to see it here.

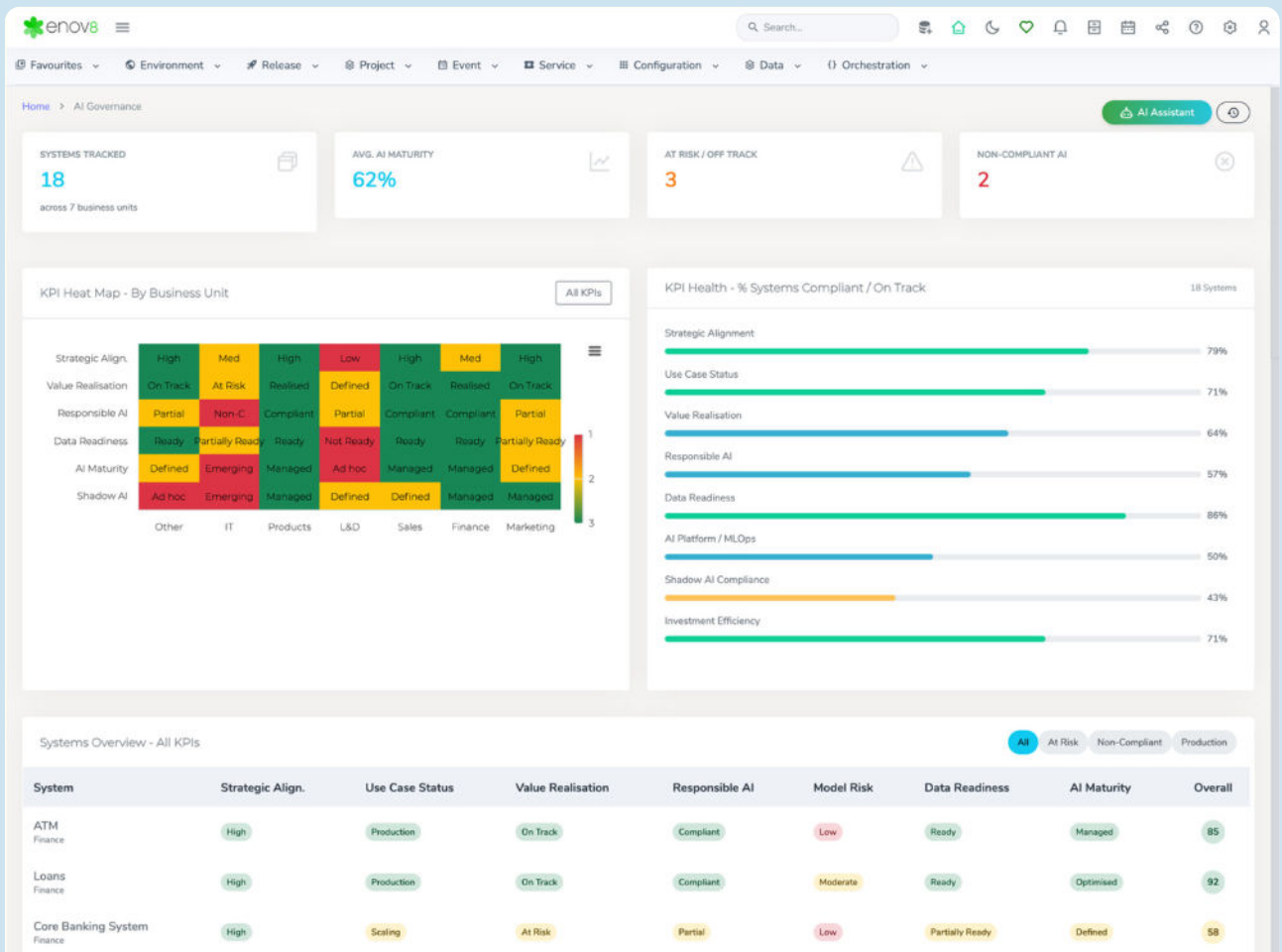


Figure 6 – Enov8 AI governance dashboard

## The vendor

Enov8 is a privately held Australian software vendor that offers several products designed to help its customers develop their DevOps capabilities and achieve agility at scale. It originated in 2013, when it was spun off from TL Consulting Group, an Australian services company operating in similar areas, to productionise and further develop the in-house solutions the firm had created to address recurring issues faced by its clients. In the time since, Enov8 has built on this foundation to launch an array of solutions designed to help you manage your IT environments, releases, and test data.

Enov8's clients span a variety of geographies and industries, though it has a particular concentration in financial services. It has offices in Sydney, Bengaluru, Singapore, and New York, and is partnered with several well-known companies, including Amazon Web Services, Microsoft, Infosys, Tata Consultancy Services, Capgemini, Coforge, Wipro, and more.

# Conclusion

The heart of Enterprise Intelligence is – as its name itself implies – the provisioning of useful, centralised, and holistic knowledge about your enterprise, and specifically your software development lifecycle, to all of your users. The “all” in that sentence is important: the platform does not pigeonhole itself into only serving technical users, but seeks to supply information throughout your organisation, all the way up to the c-level. Ultimately, this should help marry your organisational strategy with delivery.

Moreover, the platform does whatever it can to make sure that the information it provides is tailored to the user role, meaning that each user is served the intelligence that is most relevant and useful to them. This is particularly important for users with a broad remit (such as the c-suite), as it allows them to gain an understanding of your software development lifecycle without bombarding them with either technical information, that they can’t necessarily interpret, or too much information in general.

If this was all it did, it would still be very useful. The fact that it also provides a robust selection of tools for managing, orchestrating, and automating your IT environments, releases, and test data is more than the cherry on top, it’s an entire second cake. We have a particularly deep appreciation for its wide array of test data management capabilities, and we expect its use of agentic AI – complete with governance of the same – will be especially eye-catching.

That said, we believe its use of AI is, ultimately, of secondary significance to its overall intelligence architecture. To wit, by incorporating several major aspects of the software development lifecycle – including environments, releases, (test) data, and applications – Enterprise Intelligence has developed into what we suspect is a newly emerging category of product: a software delivery control tower, providing a singular, overarching framework for visibility, governance, and orchestration of your entire software development lifecycle.

Taking all of this into consideration, the bottom line is that if you need help either understanding or managing your software development lifecycle, you should, at the very least, give serious consideration to Enov8 Enterprise Intelligence.

# About the author



## **DANIEL HOWARD**

Senior Analyst

**D**aniel is an experienced member of the IT industry. In 2014, following the completion of his Master of Mathematics at the University of Bath, he started his career as a software engineer, developer and tester at what was then known as IPL. His work there included all manner of software development and testing, and both Daniel personally and IPL generally were known for the high standard of quality they delivered. In the summer of 2016, Daniel left IPL to work as an analyst for Bloor Research, and the rest is history.

Daniel works primarily in the data space, his interest inherited from his father and colleague, Philip Howard. Even so, his prior role as a software engineer remains with him, and has carried forward into a particular appreciation for the development, DevOps, and testing spaces. This allows him to leverage the technical expertise, insight and 'on-the-ground' perspective garnered through his old life as a developer to good effect.

Outside of work, Daniel enjoys latin and ballroom dancing, board games, skiing, cooking, and playing the guitar.

## Bloor overview

Technology is enabling rapid business evolution. The opportunities are immense but if you do not adapt then you will not survive. So in the age of Mutable business Evolution is Essential to your success.

*We'll show you the future and help you deliver it.*

Bloor brings fresh technological thinking to help you navigate complex business situations, converting challenges into new opportunities for real growth, profitability and impact.

We provide actionable strategic insight through our innovative independent technology research, advisory and consulting services. We assist companies throughout their transformation journeys to stay relevant, bringing fresh thinking to complex business situations and turning challenges into new opportunities for real growth and profitability.

For over 25 years, Bloor has assisted companies to intelligently evolve: by embracing technology to adjust their strategies and achieve the best possible outcomes. At Bloor, we will help you challenge assumptions to consistently improve and succeed.

## Copyright and disclaimer

This document is copyright **Bloor Research 2026**. No part of this publication may be reproduced by any method whatsoever without the prior consent of Bloor Research.

Due to the nature of this material, numerous hardware and software products have been mentioned by name. In the majority, if not all, of the cases, these product names are claimed as trademarks by the companies that manufacture the products. It is not Bloor Research's intent to claim these names or trademarks as our own. Likewise, company logos, graphics or screen shots have been reproduced with the consent of the owner and are subject to that owner's copyright.

Whilst every care has been taken in the preparation of this document to ensure that the information is correct, the publishers cannot accept responsibility for any errors or omissions.



 20-22 Wenlock Road, London N1 7GU, UK

 +44 (0) 1494 311 460

 [info@bloorresearch.com](mailto:info@bloorresearch.com)

 [www.bloorresearch.com](http://www.bloorresearch.com)